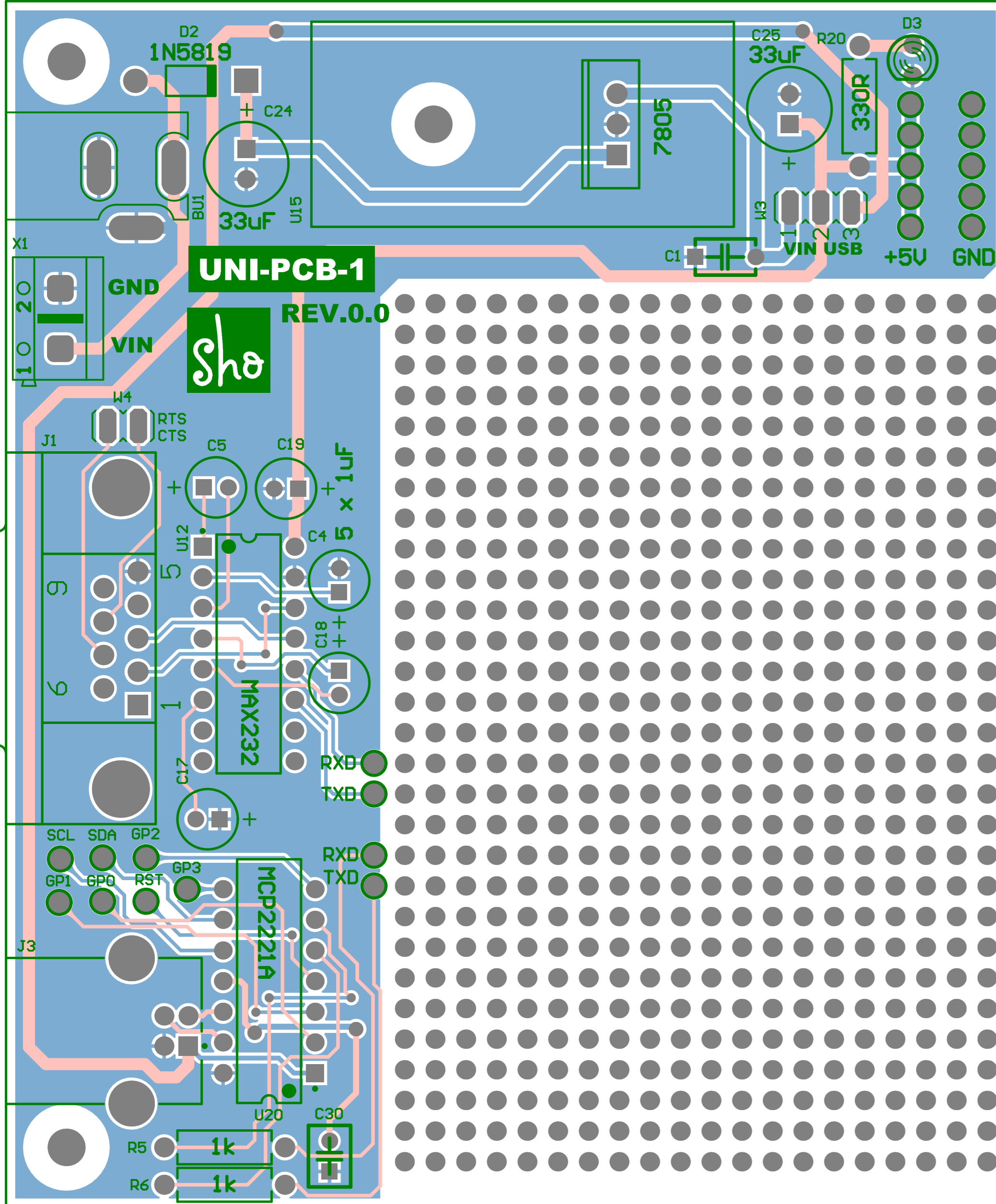


Title UNI-PCB-1		S.Hofmann info@shotech.de www.shotech.de Revision: 0.0	
Size: A4	Description: UNI-PCB-1, incl. Power, RS232 and USB		
Date: 15.05.2020	Time: 21:20:07	Sheet 1 of 1	
File: UNI-PCB1-Sheet1.SchDoc			





Bearbeiter: S. Hofmann
 Tel: 040 /
 Fax: 040 / 76906856
 Email: shop@shotech.de

Bill of Materials

Datum:	15. Mai 2020
Zeit:	21:20:12
Variante:	None
Bezeichnung:	UNI-PCB-1
Revision:	0.0

Quantity	Designator	Footprint	Bemerkung	Value	MFT	Order-Code	shotech
1	BU1	DC10B		DC005		DC005-Gelb	000923
1	C1	CAP_Radial_5MM	Keramik-Vielschichtkondensator MLCC – bedrahtet 0.1uF 50volts 10% X7R 5mm LS	100nF/50V	Vishay / BC Components	K104K15X7RF53H5	001347
5	C4, C5, C17, C18, C19	CAPPR2-5x11	1uF/50V/20%/2000h/RM 2	1uF/50V	Würth Elektronik	860020672005	001550
2	C24, C25	CAPPR5-5x7	KS 33uF 25V 20% 5x7/2,5	33uF/25V	Chang Yang	KS1E330MC070B25CV0	001346
1	C30	CAP_Radial_2.54MM	Vs-Kond 470nF 63V Z5U RM2,54	470nF	KEMET	C320C474M5U5TA	001598
1	D2	DO41	Schottky Dioden & Gleichrichter 1.0A 40V	1N5819	Taiwan Semiconductor	1N5819 R0	001568
1	D3	LED3MM	LED diffus rot 80mcd 45° 3mm	LED 3mm ROT	Everlight	204-10SURD/S530-A3	001321
1	J1	DSUB1.385-2H9	D-Sub-Bu. 9polig Lötstift 90° FP8,08mm	DSUB9-BU	MPE Garry	597-3-009F-NB0NS-BS0	001578
1	J3	CON-A-USBSB	USB-Buchse B print 90°	USB-B	Assmann WSW	A-USBSB	001618
1	KK1		U-Kühlkörper Alu blank TO220 35x17x13	SK13/35/AL/220	Fischer Elektronik	SK13/35/AL/220	001592
21	PP1, PP2, PP3, PP4, PP37, PP38, PP39, PP40, PP41, PP42, PP43, PP44, PP45, PP46, PP47, PP48, PP49, PP50, PP51, PP52, PP53	PP-RTM1364E-Z	Lötstift quadr. 1.05x10mm verzinkt	RTM1364E-Z	Vogt	1364E.68	001570
2	R5, R6	RES10-7.8X2.8 - 1k	Metallsch. 0207 1/4W 1%	1k	frei	RMGK001	001235
1	R20	RES10-7.8X2.8 - 330R	WIDERSTAND, 207, axial, 1%	330R			001588
1	U12	PE16	RS232/V.24 Schnittstelle DIP16	MAX232N	Texas Instruments	TS232CPE	001579
1	U15	TO-220A - SK13 35	U-Reg +5V 1A TO220	TS7805CZ	Taiwan Semiconductor	TS7805CZ C0G	001573
1	U20	DIP-14	USB 2.0 to I ² C/UART Protocol Converter with GPIO , PDIP-14	MCP2221A	Microchip	MCP2221A-I/P	001596
1	W3	JP2	Jumper 3pin	Jumper 3pin	frei	frei	001564
1	W4	JP1	Jumper RM2,54, rot	JUMP-RT		JUMP-RT	001564
1	X1	AK500/2	AR-Klemmen 250V 2pol grau	ARK500/2	PTR-Messtechnik	AK500/2DS-5,0-V/GRAU	001576