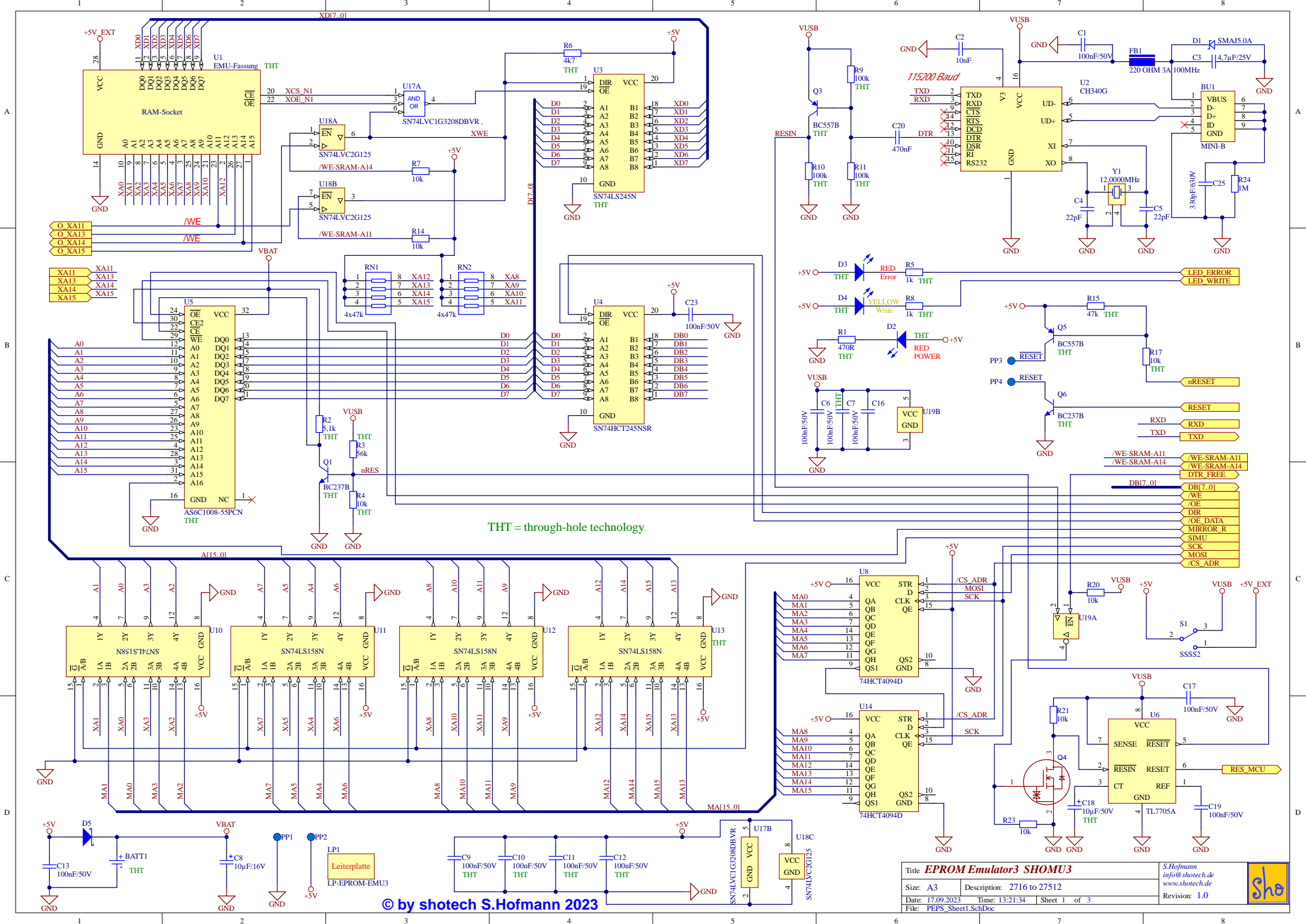


© by shotech S.Hofmann 2020

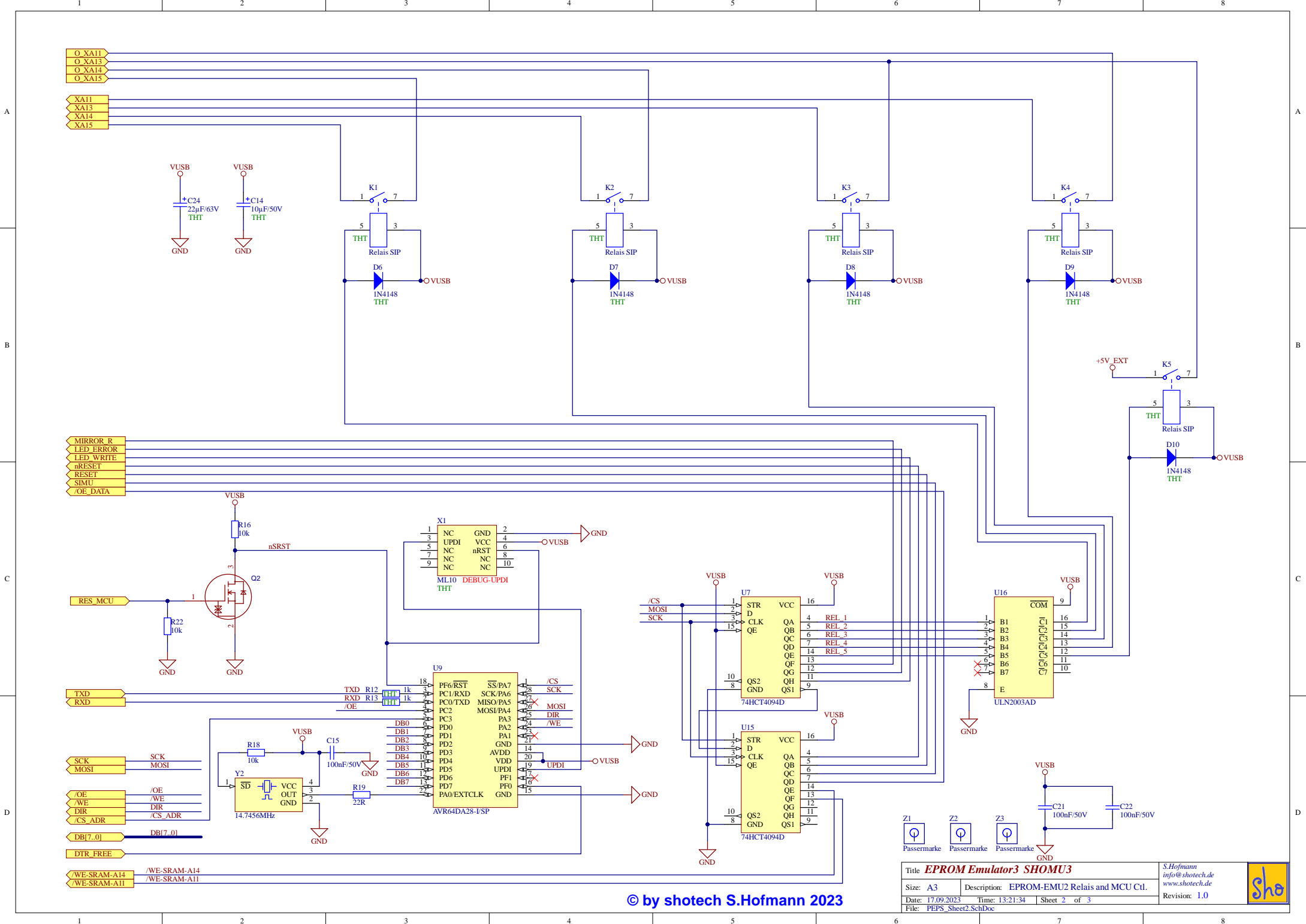
Title <b>EPROM Emulator3 SHOMU3</b>		S.Hofmann info@shotech.de www.shotech.de	
Size: A3	Description: Overview		Revision: 0.0
Date: 17.09.2023	Time: 13:21:34	Sheet 0 of 3	
File: PEPS_Sheet0.SchDoc			





THT = through-hole technology

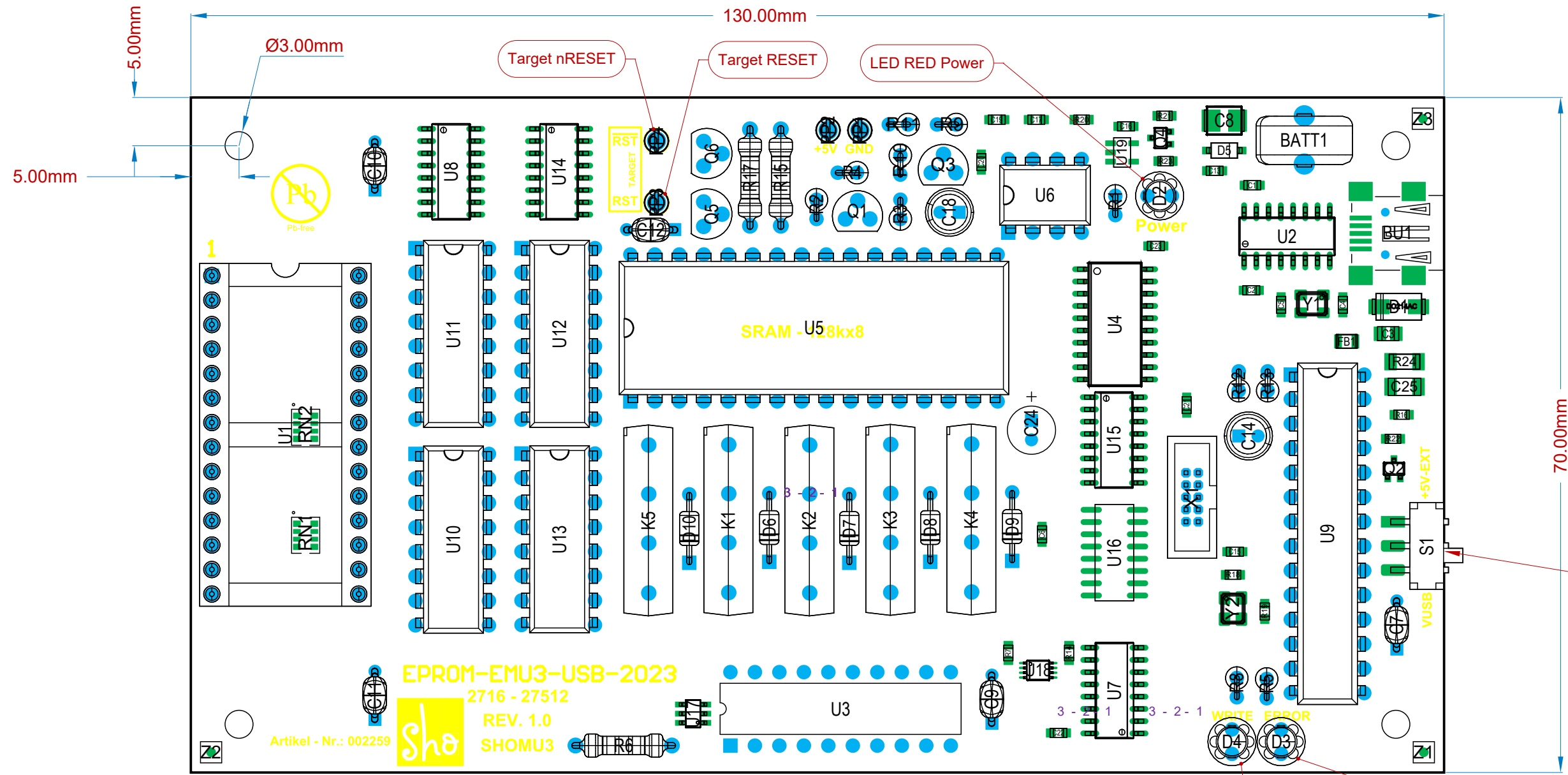




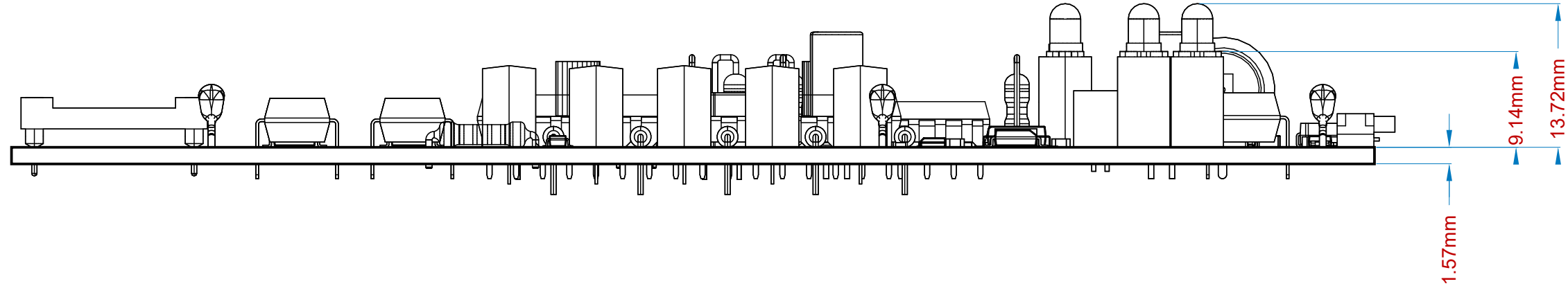
Title <b>EPROM Emulator3 SHOMU3</b>		S.Hofmann info@shotech.de www.shotech.de	
Size: A3	Description: EPROM-EMU2 Relais and MCU Ctl.		Revision: 1.0
Date: 17.09.2023	Time: 13:21:34	Sheet 2 of 3	
File: PEPS_Sheet2.SchDoc			

© by shotech S.Hofmann 2023





Line #	Designator	Comment	Quantity
1	BATT1	EECS0HD334V	1
2	BU1	MIN-B	1
3	C1, C6, C13, C15, C16, C17, C19, C21, C22, C23	100nF/50V	10
4	C2	10nF	1
5	C3	4.7µF/25V	1
6	C4, C5	22pF	2
7	C7, C9, C10, C11, C12	100nF/50V	5
8	C8	10µF/16V	1
9	C14, C18	10µF/50V	2
10	C20	470nF	1
11	C24	22µF/63V	1
12	C25	330pF/630V	1
13	D1	SMAJ5.0A	1
14	D2, D3	LED 3mm ROT	2
15	D4	LED 3mm Gelb	1
16	D5	BAT46W-7-F	1
17	D6, D7, D8, D9, D10	1N4148	5
18	FB1	UPB201209T-221Y-N	1
19	K1, K2, K3, K4, K5	Relais SIP	5
20	PP1, PP2, PP3, PP4	Prüfpunkt	4
21	Q1, Q6	BC237B	2
22	Q2, Q4	DMN601WK-7	2
23	Q3, Q5	BC557B	2
24	R1	470R	1
25	R2	5,1k	1
26	R3	56k	1
27	R4, R17	10k	2
28	R5, R8, R12, R13	1k	4
29	R6	4k7	1
30	R7, R14, R16, R18, R20, R21, R22, R23	10k	8
31	R9, R10, R11	100k	3
32	R15	47k	1
33	R19	22R	1
34	R24	1M	1
35	RN1, RN2	4x47k	2
36	S1	SSSS2	1
37	U1	RAM-Socket	1
38	U2	CH340G	1
39	U3	SN74LS245N	1
40	U4	SN74HCT245NSR	1
41	U5	AS6C1008-55PCN	1
42	U6	TL7705A	1
43	U7, U8, U14, U15	74HCT4094D	4
44	U9	AVR64DA28-I/SP	1
45	U10, U11, U12, U13	SN74LS158N	4
46	U16	ULN2003AD	1
47	U17	SN74LVC1G3208DBVR	1
48	U18	SN74LVC2G125	1
49	U19	SN74LVC1G240	1
50	X1	ML10	1
51	Y1	XTAL	1
52	Y2	14.7456MHz	1
53	Z1, Z2, Z3	Passermarke	3



Material	Layer	Thickness	Dielectric Material	Type	Gerber
	Top Overlay			Legend	GTO
Surface Material	Top Solder	0.01mm	Solder Resist	Solder Mask	GTS
Copper	Top Layer	0.04mm		Signal	GTL
		1.50mm	FR-4	Dielectric	
Copper	Bottom Layer	0.04mm		Signal	GBL
Surface Material	Bottom Solder	0.01mm	Solder Resist	Solder Mask	GBS
	Bottom Overlay			Legend	GBO
Total thickness: 1.59mm					



© by shotech S.Hofmann 2023

THE INFORMATION CONTAINED IN THIS DRAWING IS THE SOLE PROPERTY OF shotech Steffen Hofmann. ANY REPRODUCTION IN PART OR AS A WHOLE WITHOUT THE WRITTEN PROPRIETARY AND CONFIDENTIAL

		UNLESS OTHERWISE SPECIFIED:		NAME	DATE	shotech Steffen Hofmann	
		DIMENSIONS ARE IN INCHES		DRAWN	17.09.2023	TITLE	
		TOLERANCES:		CHECKED		Eprom Emulator2 - 2716 - 27512	
		FRACTIONAL ±		ENG APPR.		SIZE DWG. NO.	
		ANGULAR: MACH ± BEND ±		MFG APPR.		00232019	
		TWO PLACE DECIMAL ±		Q.A.		SCALE: 1:1 WEIGHT: SHEET 1 OF 1	
		THREE PLACE DECIMAL ±		COMMENTS:			
		INTERPRET GEOMETRIC TOLERANCING PER:					
		MATERIAL					
NEXT ASSY		USED ON		FINISH			
APPLICATION				DO NOT SCALE DRAWING			



